

Habitat Committee Update

Michelle Bachman

NEFMC Staff, Habitat PDT Chair

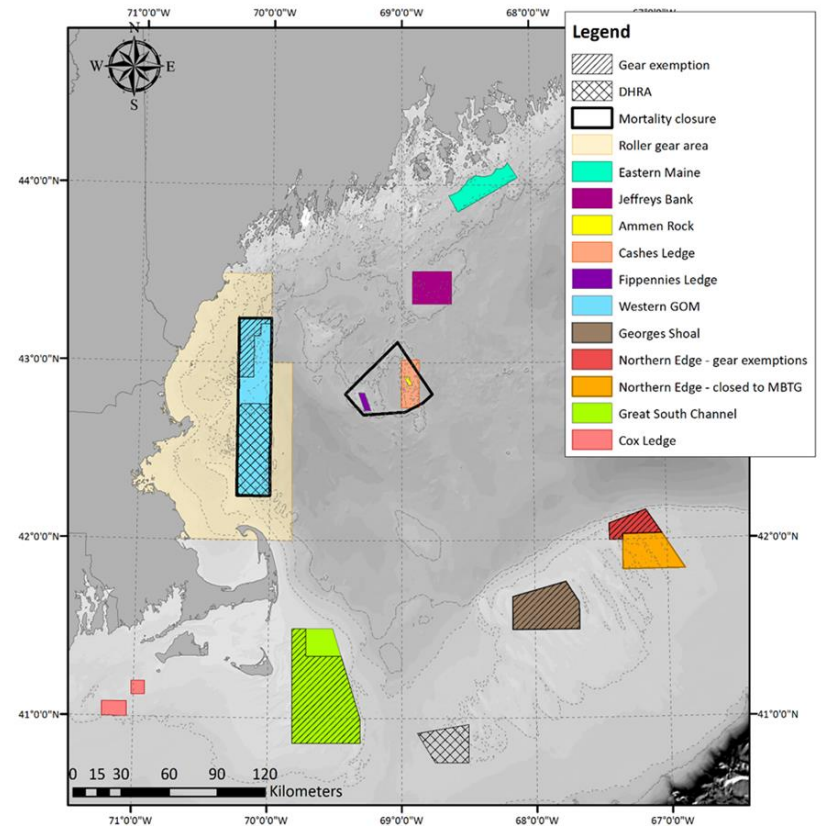
**NEFMC Meeting
September 28, 2017**



New England
Fishery Management Council

Omnibus Habitat Amendment 2

- Awaiting publication of amendment/FEIS– 60 day comments; proposed rule follows – 30 day comments
- Agency ROD 90 days from publication of FEIS
- Implementation spring 2018
- Triggers one year continued access for clam dredges in two HMAs

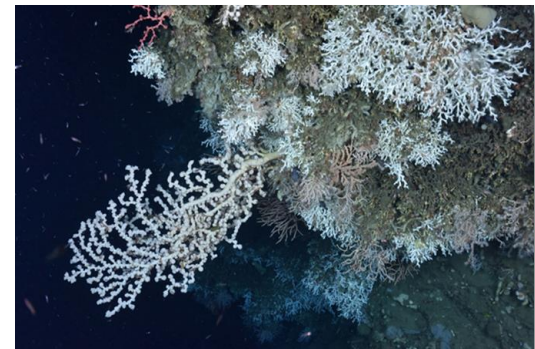


Deep-Sea Coral Amendment

- Final Council action on canyon/slope alternatives pending; other sections approved in June
- PDT has been assembling data on recent fishing activity along the shelf/slope break to support refinement of Option 7 broad zone
- Input on the updated Option 7 will be solicited via the Habitat Advisory Panel and Committee before the revised option and analysis are presented to the Council for final action



Soft corals in Jordan Basin. Credit: NOAA and DFO, 2017 ROPOS Cruise.

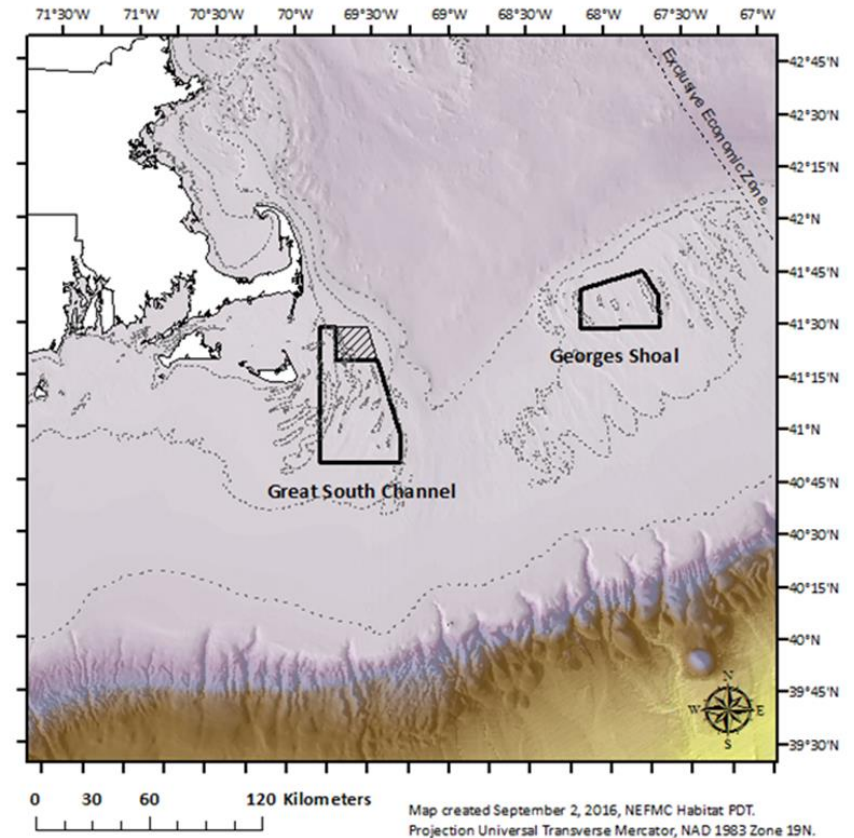


Stony corals in a canyon off Georges Bank. Credit: NOAA and DFO, 2017 ROPOS Cruise.



Clam Dredge Framework

- Purpose: identify areas for continued clam dredge access in two OHA2 HMAs
- PDT developing updated habitat maps
- Surfclam resource on Nantucket Shoals was surveyed this summer (SCMFIS)
- Next steps are to develop spatial management alternatives
- Council review of alternatives will be held until after NMFS' decision on OHA2

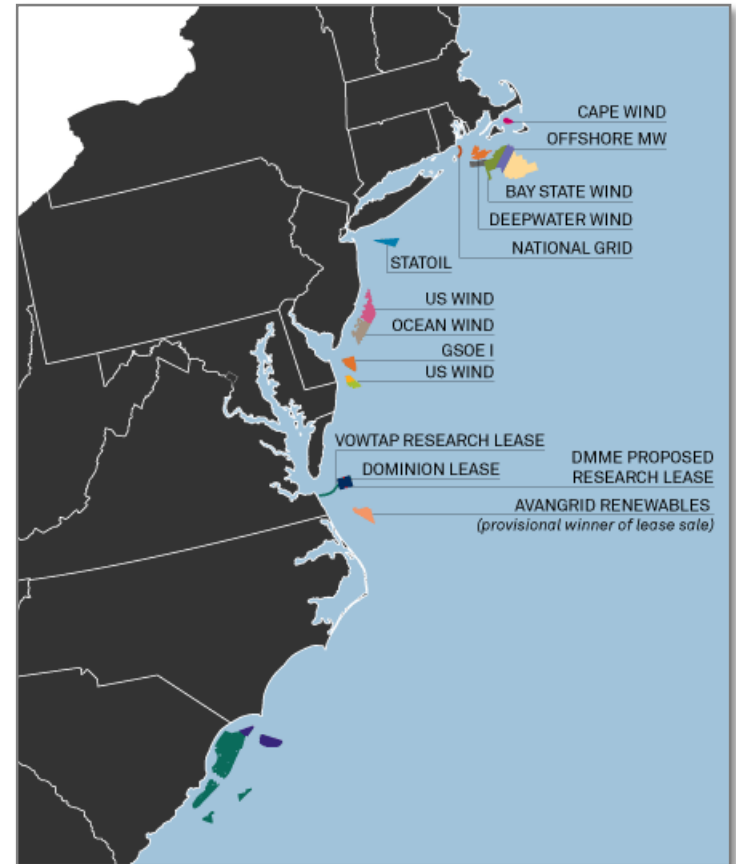




Offshore Wind



- Goals: develop Council expertise and represent fishery interests in development process
 - Staff/chair participated in September 19 workshop
 - Briefings during 10/4/17 Habitat Committee meeting
- Multiple projects are ramping up
- Additional education and outreach opportunities later this fall

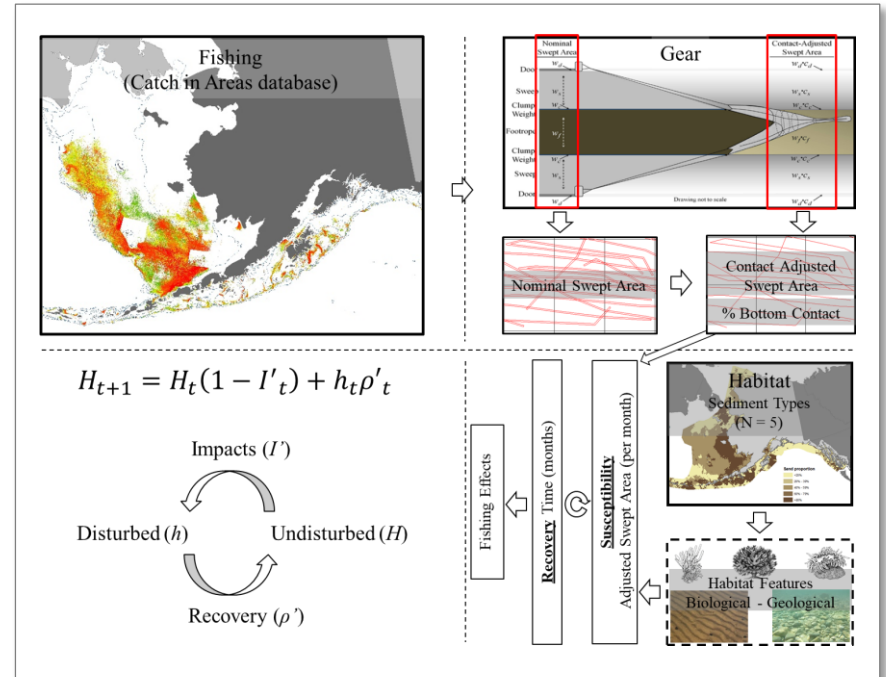


Source: Cat Weeks, BOEM via S&P Global Market Intelligence



Fishing Effects Model Updates

- Goal is to have an updated fishing effects model that can be used to analyze and develop FMP actions
- Council has contracted with Alaska Pacific University; partnership with Habitat PDT
- Transition to Fishing Effects Northeast model; builds on SASI and addresses peer review concerns
- Results during 2018



Source: Brad Harris, FAST Lab, Alaska Pacific University



NOAA FISHERIES



Cornell University

