

# Update Amendment 8 and Framework 5 to the Atlantic Herring FMP

**Deirdre Boelke**  
**Council Staff**

**NEFMC Meeting**  
**September 20-22, 2016**



# Outline for Presentation

1. Update on Amendment 8 – considering alternative acceptable biological catch (ABC) control rules using Management Strategy Evaluation (MSE)
2. Update on Amendment 8 – considering measures to address potential impacts of localized depletion
3. Update on Framework 5 – action considering GB haddock bycatch accountability measures (AMs)

No Council action is needed today on either action.

We do not plan to bring any Committee motions to the full Council today – both are still under development.

Draft Discussion Documents for A8 and FW5 available at:

<http://www.nefmc.org/calendar/aug.-17-2016-herring-committee-meeting>



# Purpose of Amendment 8

1. Propose a long-term ABC control rule that may explicitly account for herring's role in the ecosystem and to address the biological and ecological requirements of the Atlantic herring resource.
2. Propose measures to address potential localized depletion of Atlantic herring.

## Definition and Problem Statement

*“Localized depletion is a reduction of population size, independent of the overall status of the stock, over a relatively small spatial area as a result of intensive fishing. Scoping comments for Amendment 8 identified concerns with concentrated, intense commercial fishing of Atlantic herring in specific areas and at certain times that may cause detrimental socioeconomic impacts on other user groups (commercial, recreational, ecotourism) who depend upon adequate local availability of Atlantic herring to support business and recreational interests both at sea and on shore. The Council intends to further explore these concerns through examination of the best available science on localized depletion, the spatial nature of the fisheries, reported conflicts amongst users of the resources and the concerns of the herring fishery and other stakeholders.”*

# Amendment 8 timeline

		<b>ABC control rule</b>	<b>Localized depletion</b>
<b>2016</b>	Jan.	Council approved developing measures via MSE	Cte tasked PDT with background analyses
	Apr - May	MSE workshop #1	Cte/Council approved problem statement
	June	AP/Cte/Council review and approve outcomes	PDT tasking cont.
	July - Aug	MSE technical work, updates at Cte/Council mtgs	AP/Cte review PDT work, develop measures
	Sep - Oct		
	Nov		Develop measures
	Dec	MSE workshop #2	
<b>2017</b>	Jan	Council approve range of alternatives	
	TBD	MSE peer review; impacts analysis; public hearings; final action	
<b>2018</b>	TBD	Implementation	



# **Amendment 8:ABC Control Rule Management Strategy Evaluation**



# I. Management Strategy Evaluation (MSE)

- Council is developing alternatives via management strategy evaluation, involving:
  - Discussion about the objectives/desired outcomes of the control rule.
  - Technical analysis to test how the control rules may/may not achieve objectives.

prior to approving the Range of Alternatives.

- In June, Council approved the objectives, metrics and control rules to be evaluated (input from workshop/PDT/AP/Cte).





# I. Management Strategy Evaluation (MSE)

- Steering Committee Reconvened (several Committee members, PDT members and other experts).
- Second workshop likely December 7<sup>th</sup> and 8<sup>th</sup> in MA.
- Approve draft agenda and goals at October Herring Cmte meeting then full Council meeting in November.
- MSE work progressing nicely – expected mid-November
- Workshop will – share results, discuss if there are any new analysis needs or tweaks
- Workshop will not – charge PDT with new analyses or approve range of alternatives



# Amendment 8: Localized Depletion





## II. Localized Depletion

- January 2016 – Council asked the Cmte to discuss a range of alternatives including proposals identified in scoping and at the Jan 2016 meeting.
- January 2016 – Herring Cmte developed six tasking items for PDT and in March 2016 added six more (forage needs, fishery footprint, catch by area and month, other fishery data, etc.)
- August 2016 – AP and Cmte began discussing potential range of alternatives
- Picked up from ideas raised during scoping, Jan 2016 Herring Cmte motion, and one recommendation from Aug AP meeting



## II. Localized Depletion

The Committee recommends the Council include the following in the range of alternatives for Amendment 8 (#2-#4 apply to mid-water trawl gear only):

1. The AP motion that would close waters within **6 nautical miles** from shore in **Area 114 between June 1 – Aug 31** to all Atlantic herring vessels. This measure would sunset in two years after implementation. During that time the PDT/NEFSC should continue analysis into defining localized depletion and determining whether it exists in the Atlantic herring fishery;
2. A year round closure of Atlantic Herring Management **Area 1A**;
3. A **12 mile** inshore closure year round south of Atlantic Herring Management Area 1A (i.e., within **Areas 1B, 3 and 2**) ;
4. A **35 mile** inshore closure year round south of Atlantic Herring Management Area 1A (i.e., within **Areas 1B, 3 and 2**);
5. Close **30 min squares 99, 100, 114, 115, 123** year round.

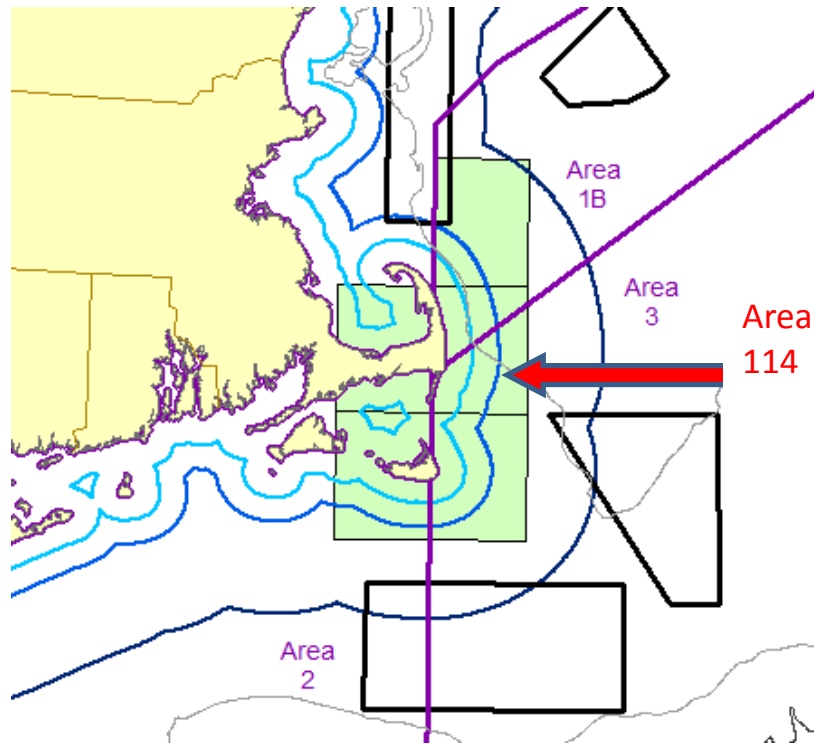
Vote: 7:0:2, carries

**But Committee work is not done yet. Requested monthly data for each.**

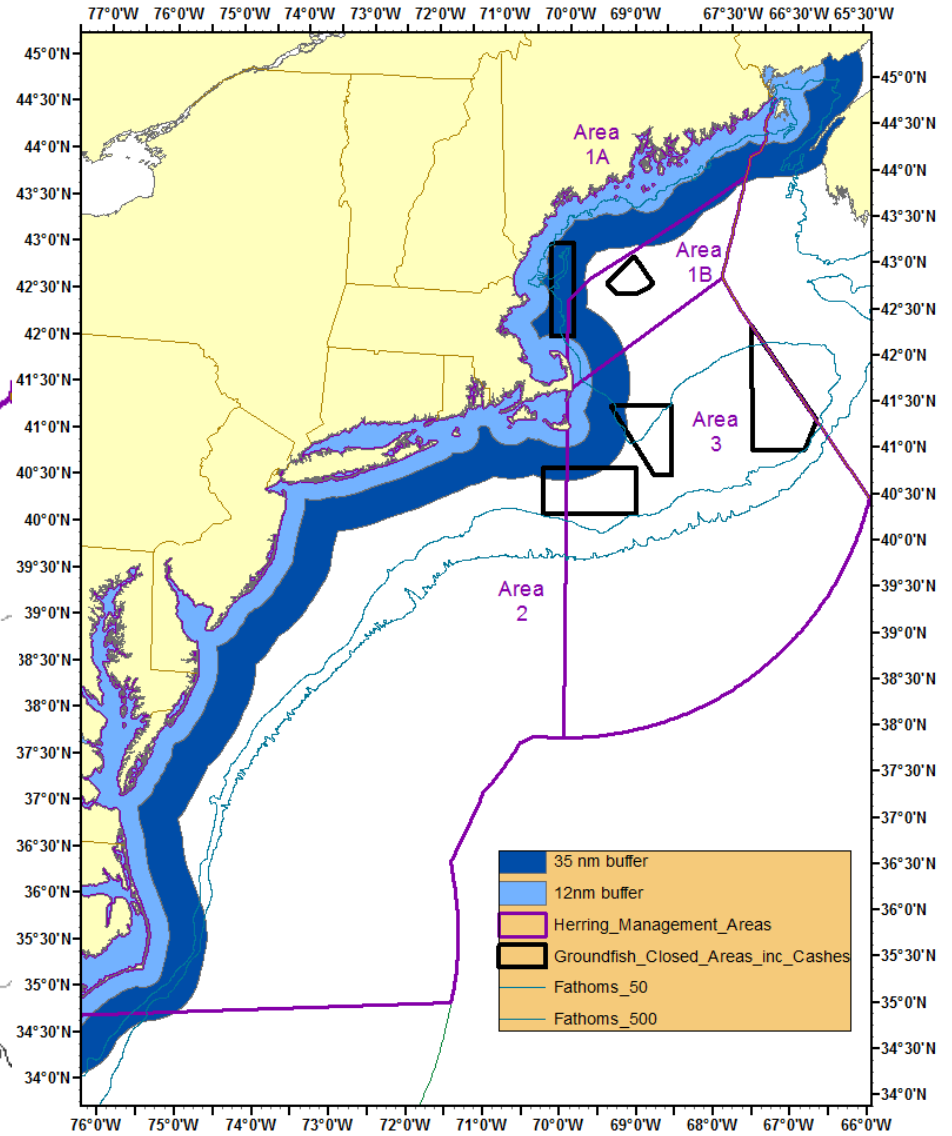
# II. Localized Depletion

Alt 1 and 5 below

Alts 2, 3, and 4 on right



6 nm, 12 nm, and 35 nm



## II. Localized Depletion – what's next

- PDT is working on summarizing herring catch within these alternatives compared to total catches etc.
- Provide monthly catches to potentially inform seasonal options.
- Fishery Overlap Metric – still brainstorming if a metric can be developed to measure the degree of overlap to help compare alternatives in terms of user conflict – some fisheries will have data limitations.
- Meetings planned in Oct and Nov to continue work on these alternatives and analyses.
- Council scheduled to approve range in January 2017.



# Framework 5: Haddock AMs



# Draft Purpose and Need

Purpose	Need
<p>Propose measures that would incentivize the midwater trawl fleet to minimize the incidental catch of haddock in the herring fishery while providing the opportunity to fully harvest the sub-ACL of herring for Herring Management Areas 3 and 1B</p>	<p>Reduce the potential for negative impacts on the herring fishery from reducing the opportunity to fish the TAC in Area 3 and 1B, and avoid potential impacts to the supply of herring used as bait for the lobster fishery.</p>
	<p>Reduce the potential for negative impacts on the mackerel fishery since those vessels are also impacted by the GB haddock AM.</p>



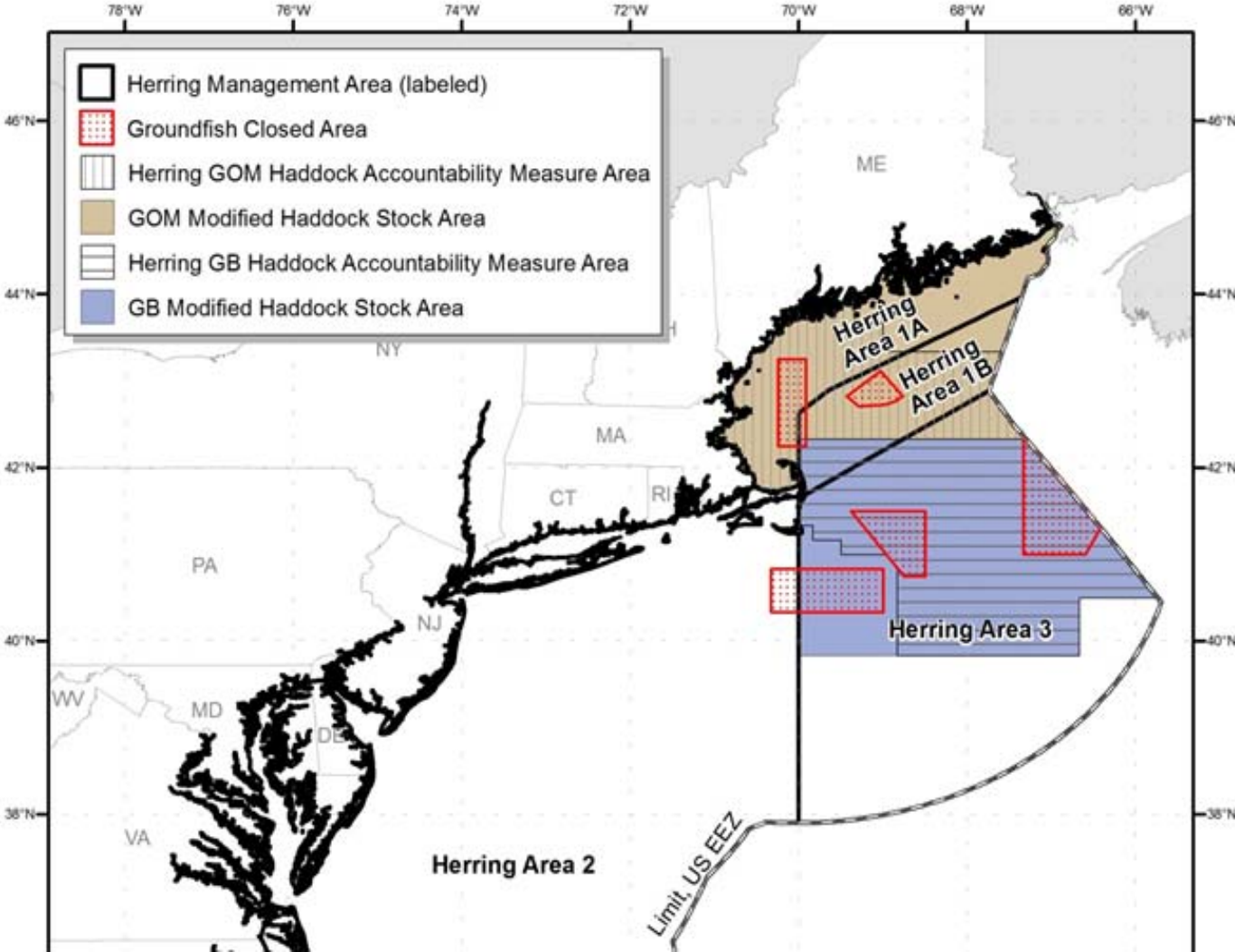
### III. FW5 Alternatives to date

- No Action – *in-season closure for herring vessels using MWT gear, and a pound for pound payback for any overage*
- Modify the GB AM area - *(currently based on an area where 90% of commercial haddock catch came from in 2006-2009)*
- Establish an AM season – *(more complex for in-season AM, but could work if bycatch higher later in the year)*
- Seasonal split of sub-ACL – *80% of sub-ACL would be available on May 1 and the remaining 20% would be added on Nov 1. AM area would close when fishery catches 80% and reopened on Nov 1 if TAC remaining.*
- Amend how estimated catch is calculated – *incorporate state portside sampling*





# No Action Haddock AM areas

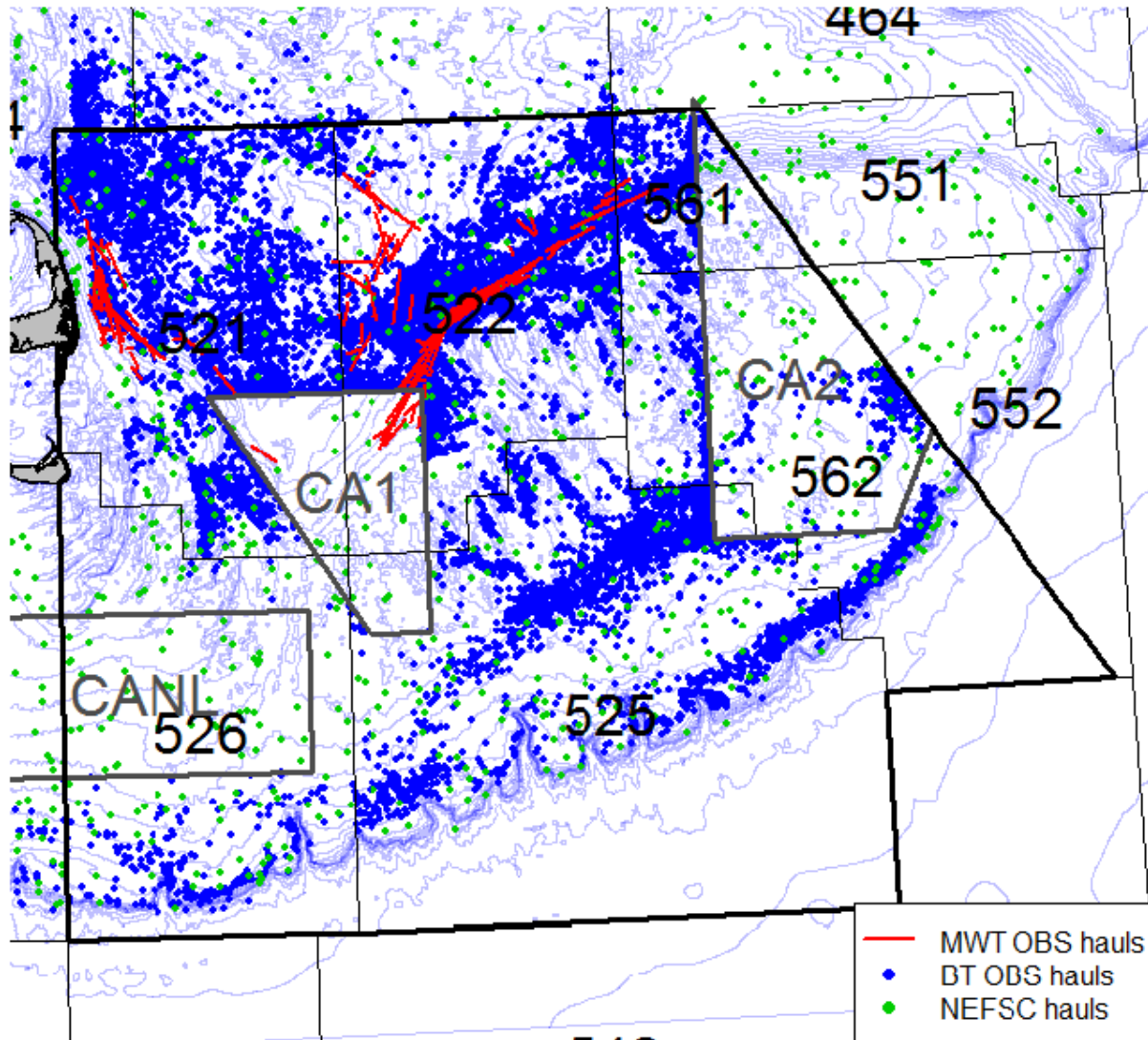


## III. Framework 5

- PDT has been brainstorming and getting data together since the summer.
- Initial review of observed MWT trips suggest some trends in haddock catches over space and time.
- However, herring fishery only takes place in discrete areas on GB, haddock bycatch rates relatively noisy, and coverage rates vary.
- Can auxiliary data sets be used to help predict haddock bycatch rates and identify and evaluate alternative AMs?
- Subgroup of PDT members identified and two conference calls earlier this month – alternatives beginning to solidify.
- Brief flavor since final action in November – still preliminary

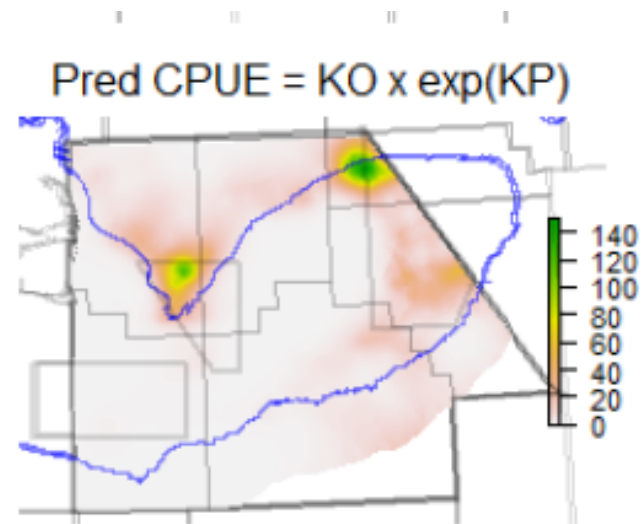
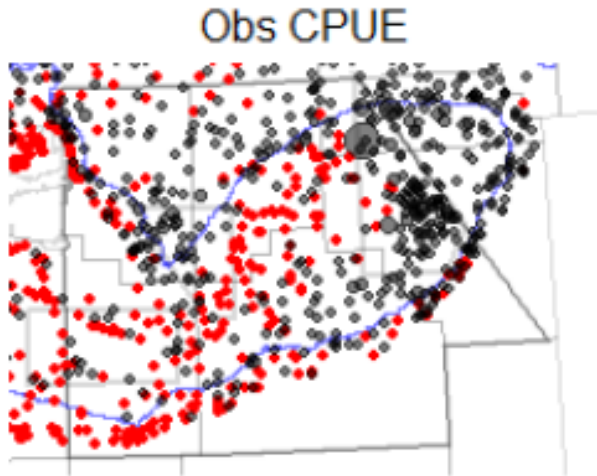


# III. Available data – 2000-2015

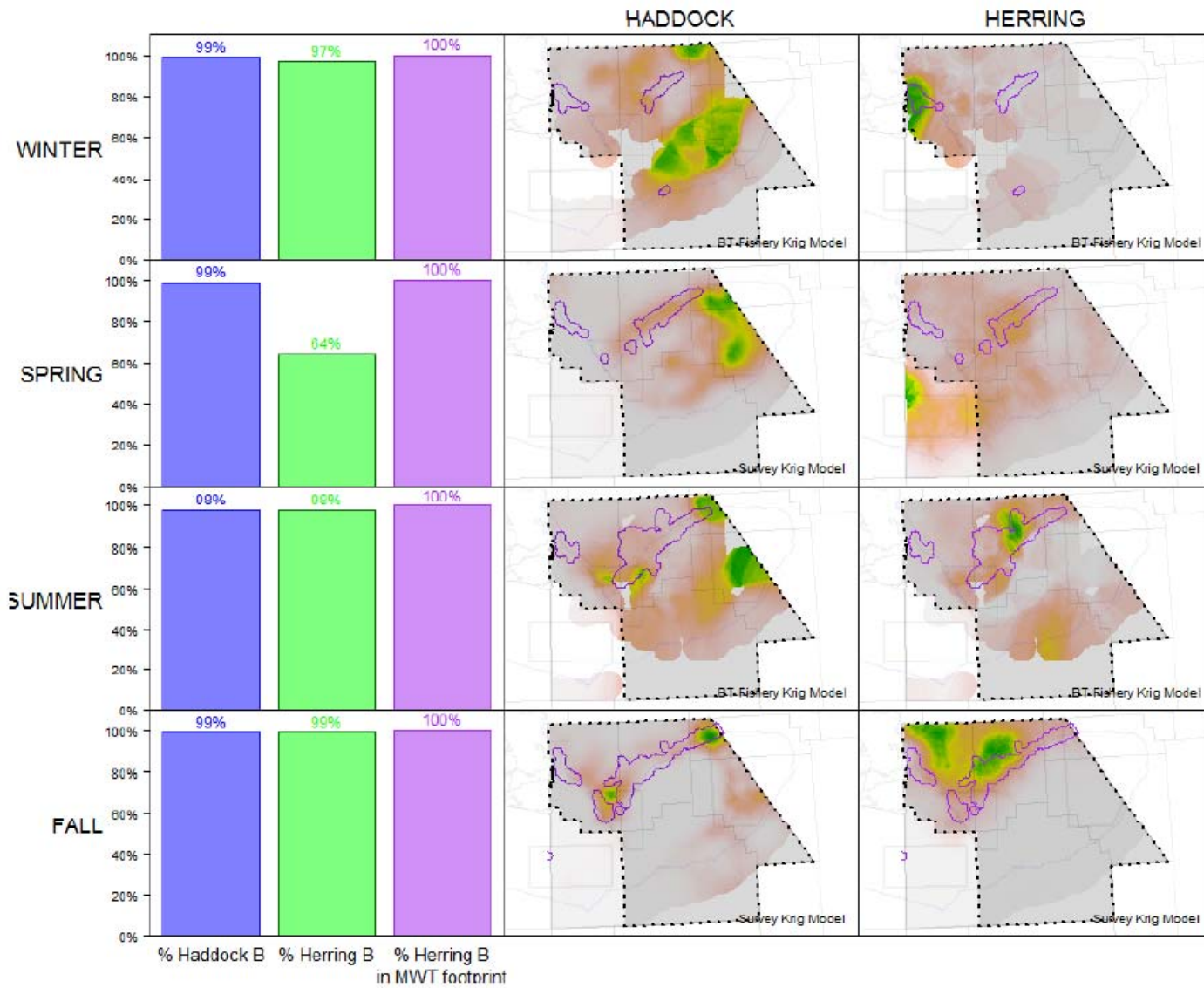


# III. Brief summary of methods

- Take point data, kriging in GIS to create contiguous surface
- Use seasonal outputs to help identify and evaluate alternatives

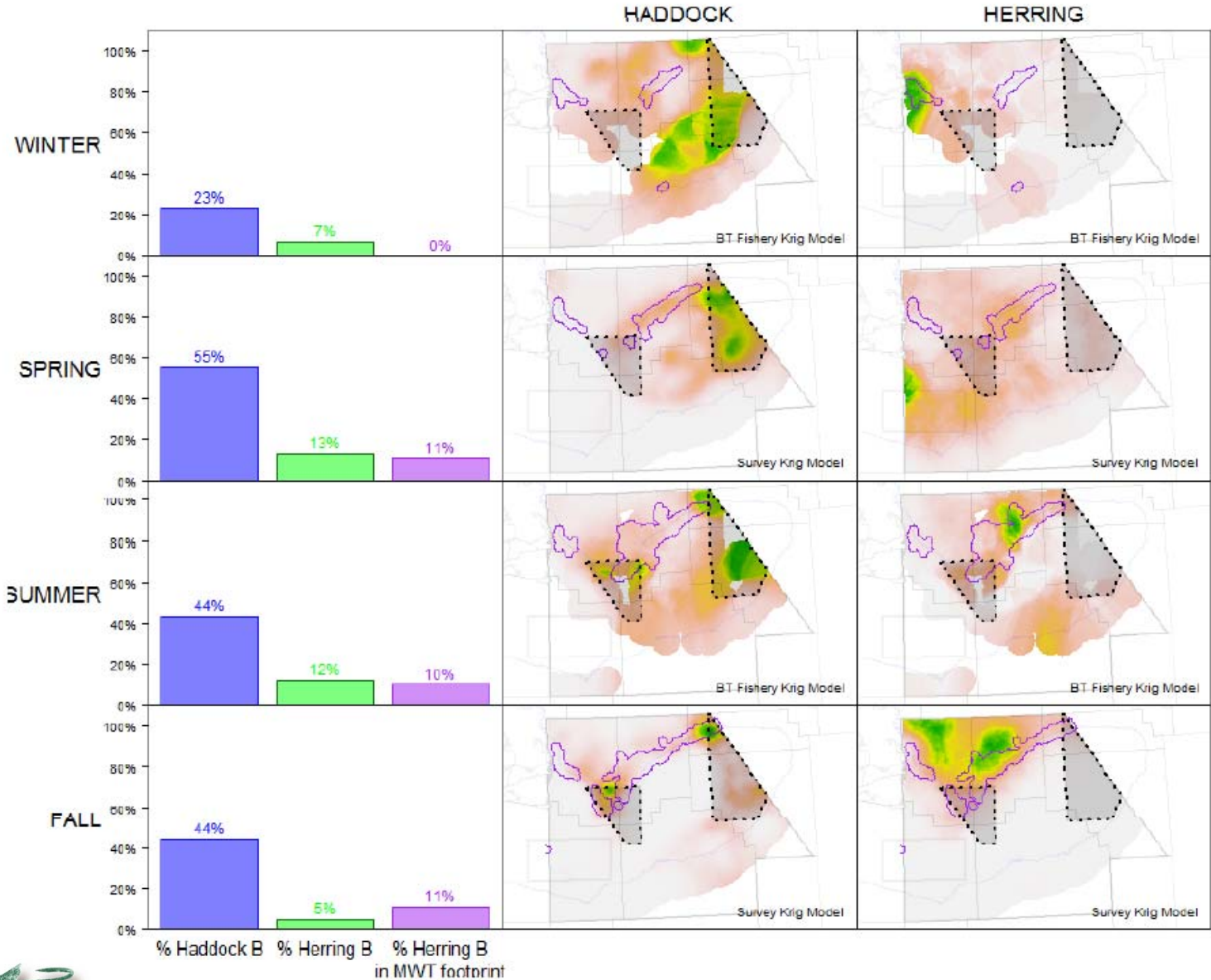


# Current AM Area





# Just CA1 & CA2



# III. Additional PDT Input

- Buffers around CA1 and CA2, series of stat areas by season, etc.
- Seasonal split of sub-ACL – 80% / 20%

*Expressed concerns about subdividing the sub-ACL*

*Instead could consider a “speed bump” approach – smaller AMs implement when 80% (or some other % caught) and larger AM area when 100% is projected.*

- Amend how estimated catch is calculated – *incorporate state portside sampling*

*NEFMC sent letter to NMFS in Jan 2016 to evaluate this. Analysis in progress, may be better to wait and see results. NMFS may be able to adjust methods outside of FW action.*

*PDT not clear if this measure would apply to GOM haddock and river herring / shad as well*





## III. Framework 5 – what's next?

- GF PDT review on Sept 27 and Herring PDT on Oct 4
- Herring Committee finalize range on October 20
- Herring AP and Cmte recommendation of preferred alternatives in early November and final NEFMC action in mid November.

